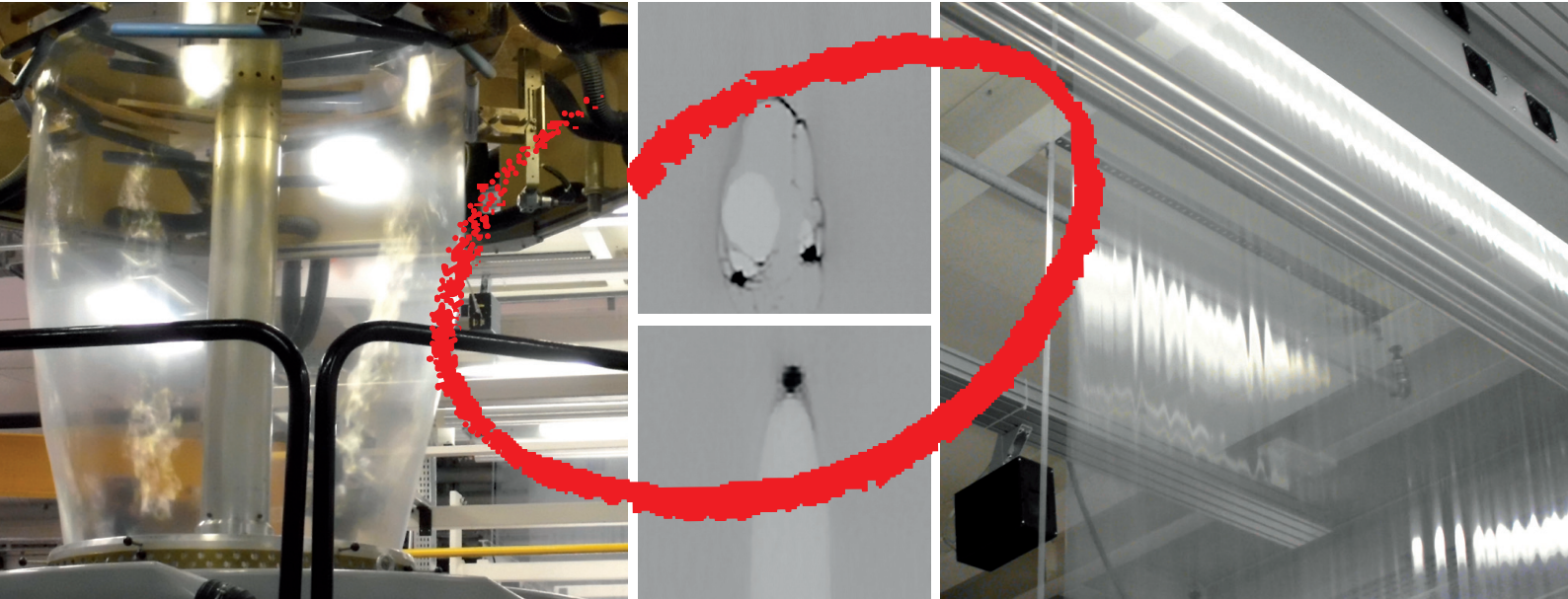


100% Blown Film Inspection: Meet Customer Demands! Improve Quality, Optimize Process, Save Material



Reliable, consistent and efficient: Comply with given quality demands

The quality requirements of producers of blown film are very demanding. Tools such as inspection systems are used to ensure consistent process control by continually inspecting and recognizing defects in the material during production. The systems are integrated with the winder for removal of found defects, inspecting 100% of the blown film for surface.

ISRA's in-line inspection units are ideally designed for use in blown film production. Typical defects such as stippling, black marks, specks, gels, insects and inclusions are detected on transparent or pigmented films. Inspection is done after flattening of the tube or before winding after the tube is cut. In order to ensure stable process quality, specific product-related tolerances and threshold values are recorded and can be accessed and optimized at any time. Inspection systems are an important tool for efficient production and process optimization in blown film manufacturing.

Applications

- 100% surface defect inspection of blown film
- Defines defect types using recipes based upon customer requirements

Advantages

- Significant reduction of customer claims
- Improved quality while simultaneously ensuring consistently high standards
- 100% documented quality inspection
- Built-in quality audit tools

Achieving Perfect Quality

It is extremely important to comply with a customer's specific product demands regarding blown film. End customers demand objective proof of quality showing the adherence to pre-agreed tolerances. The inspection systems offer a versatile tool-set that can meet customer requirements with documented assured quality. The defects discovered are displayed in real time. The system differentiates the defects by production level and classifies them as important or unimportant. The system informs the production team with optical and acoustic alarms. All data is archived for assessment and analysis. Reports tailored to the customer's static tools and trend displays help to prevent errors and reduce costs.

Area of Application and Technical Data

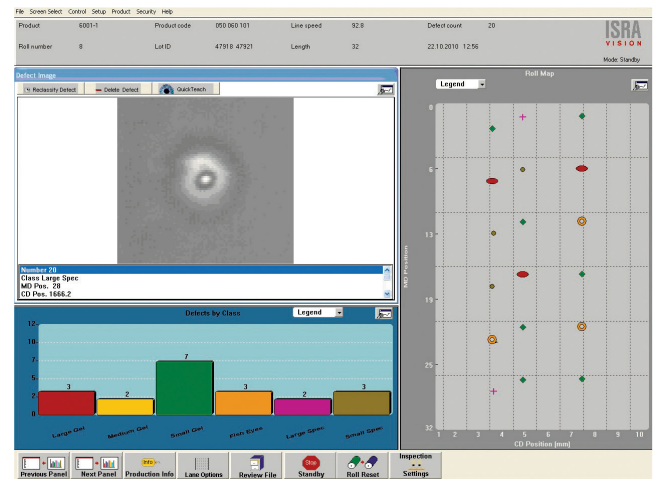
Material	Blown-film
Characteristics	transparent, colored, translucent, varying in thickness and optical characteristics
Web width	Any, typically: 2,400 mm
Web feed	Typically: 50 – 200 m / min
Types of defects	Any, such as: Gels, fish-eyes, specks, insects
Smallest defect	Typically: 0.1 – 0.25 mm

Process Reliability

Built-in in-line tools to support quality audits - such as calibration and validation concepts - assure highest customer acceptance and maximum secured system uptime.

Features

- 100 % Inspection – optimum process control
- Quality-View – trend detection, counter measure activation work optimization
- Quick-Select – important images in one view
- RT Viewer – remote system access anywhere
- DataMining – for reporting and analysis
- Gel-counter – inspection in detail for:
 - Operation in production and lab extruder
 - High-resolution inspection of certain region of interest on the web
 - Export of statistical data for quality grading such as mean defect density per sqm



Optimize your ROI with the technology leader **ISRA**

Headquarter:
 ISRA VISION GmbH
 Industriestraße 14, 64297 Darmstadt, Germany
 Tel: +49 6151 948-0
 info@isravisoin.com

www.isravisoin.com

