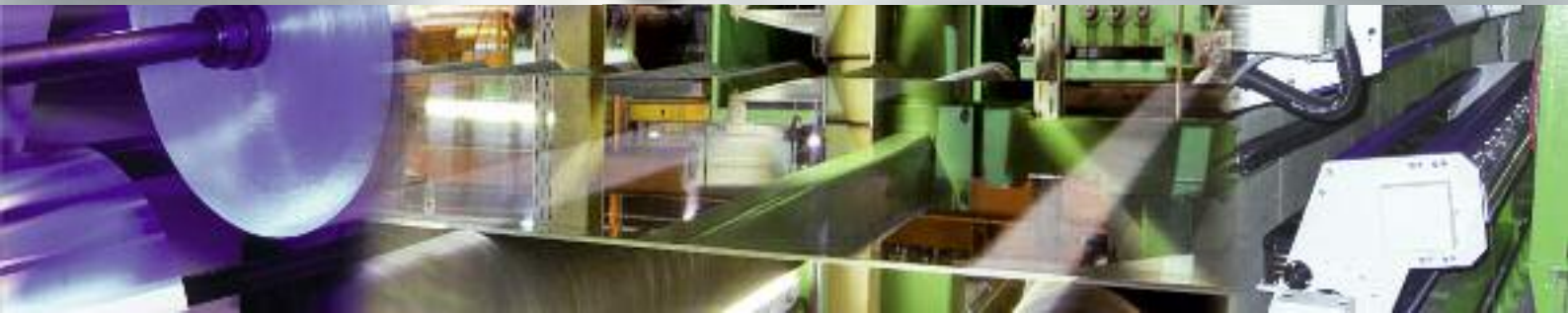


**SURFACE
MASTER**



Breaking the Limits
of Automatic Surface Inspection
The New Standard for Aluminium

100%
Correct Quality
Decisions

SURFACE MASTER

Surface quality assessment at its best

Fast, reliable, and extremely efficient:
Production and product optimization with **SURFACE MASTER**

SURFACE MASTER - the best system to perform continuous process and production optimization along the complete production chain – for overall efficiency. **SURFACE MASTER** is based upon the experience of over 400 global installations for metals surface inspection. Leading aluminium producers worldwide rely on ISRA VISION PARSYTEC inspection solutions.

SURFACE MASTER provides aluminium manufacturers with most important information enabling them to significantly improve their production and thereby increase yield significantly.

SURFACE MASTER integrates seamlessly into any process environment, providing perfect inspection and yield monitoring at all stages of production, leading inevitably to unbeatable product quality.

The new **SURFACE MASTER** product line increases your capabilities for aluminium flat rolling processing:

- ✓ Most powerful image processing capabilities for most reliable defect detection
- ✓ Advanced, multi-stage classification technologies for highest classification accuracy
- ✓ Surface data quality enhancement leads to typical 100% correct quality decisions
- ✓ Pre-set classification for fast and low cost implementation
- ✓ Real time quality view for process improvement
- ✓ Intuitive classifier for line specific defects – tailored to your needs
- ✓ Certified quality auditing tools to ensure long term high performance
- ✓ Additional value:
 - width measurement
 - quality data archive and process analysis
 - texture and surface analysis
 - real time alarms to reduce scrap and improve production
 - defect tracking and marking for improved downstream processing



All this is accomplished by **on-top innovations** like:

- ✓ Company wide quality & yield management with Quality Management System (QMS)



SURFACE MASTER

Enhanced data quality – the key to success

Unique multi-stage classification of **SURFACE MASTER** reaches new dimensions in performance, classification rates, speed, and set-up time

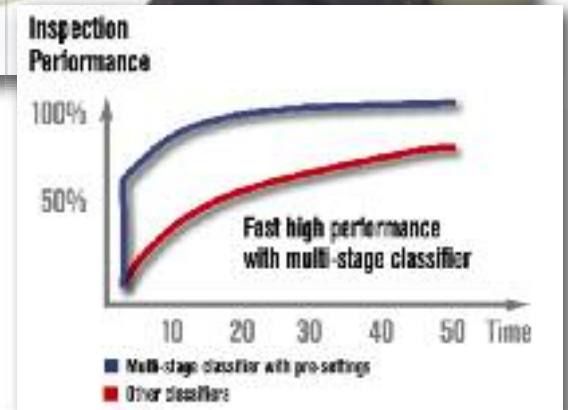
Fastest tuning, **easiest intuitive** operating, highest, **most efficient** classification, enhanced **data quality** with relevant data only, ending up in **highest inspection performance** – we made it our business to cover these requirements. Save time and money, and avoid wasting time with other systems.

The advanced **multi-stage classification** technology as one of the core modules of **SURFACE MASTER** provides excellence in defect recognition which goes beyond inspection. This fast, accurate, flexible classifier innovation, is combined with a learning classifier for line specific defects and the Instant Classifier™ pre-set classification for standard applications resulting in highest classification performance.

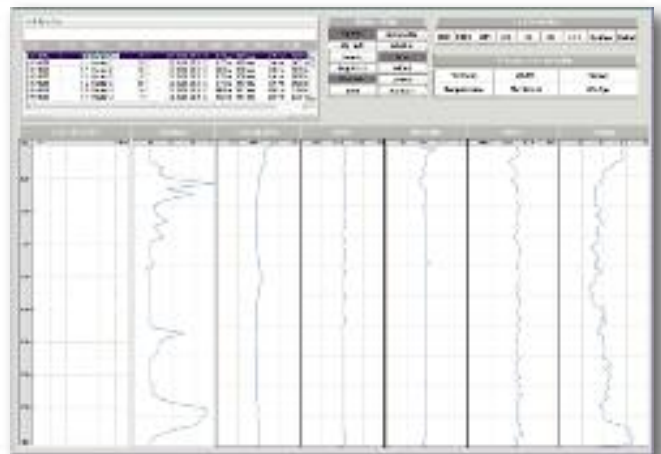
- Set-up, commissioning and tuning designed for operators not scientists – easy to understand and to operate
- Integrated, intelligent and intuitive tools to manage image defect collections and classifiers – simple to utilize, highly reliable
- Classifier tuning without influence on running production including extensive check of tuning results for risk free switch from test to active classifier

Facts you can rely on – technologically and valuable

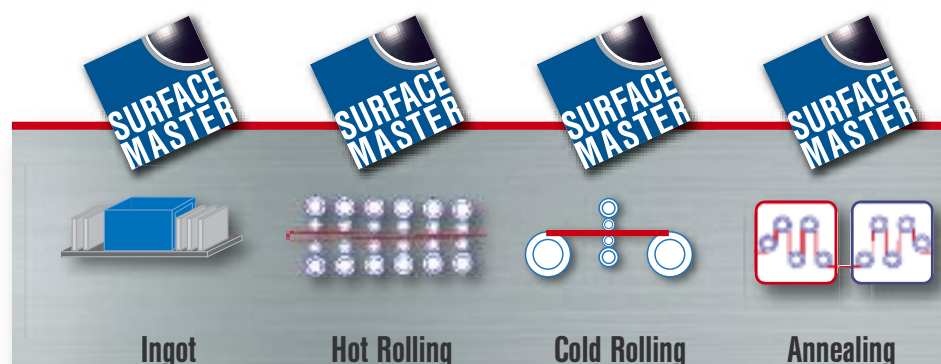
- **Best quality inspection performance**
 - ✓ Intelligent defect data filtering and imaging
 - ✓ Team of hierarchical, multi-stage classifiers
 - ✓ Efficient non-defect detection by pre-classification
 - ✓ Roll mark detection by focused LED illumination
 - ✓ Inspection immunity to pass-line deviations
 - ✓ Low contrast defect detection
 - ✓ Edge defect detection for high material saving
- **Highest system availability**
 - ✓ High-end, state-of-the-art standard components
 - ✓ Optimum components redundancy
 - ✓ Easy to exchange spare parts
 - ✓ Global support network 24/7



Save time and money:
Multi-stage classification provides best performance at shortest set-up time



For highest efficiency: process analysis at one view



SURFACE MASTER

Empowers aluminium production

■ New reporting and analyzing tools

- ✓ New interactive online live view showing specific defects with the possibility to add operator observations
- ✓ Advanced reporting: coil quality, shift quality, diagnosis, performance
- ✓ For best decision making: Quality EXPERT5i software solutions to support quality decisions that reduce time and scrap

■ Extended quality audit capabilities:

- ✓ Certified calibration procedures
- ✓ Long-term performance monitoring
- ✓ Advanced self-diagnostics with reporting of component faults

■ Easy integration and fast start-up:

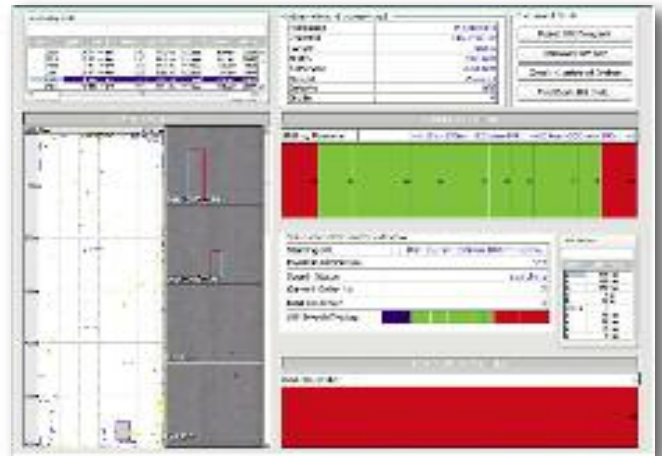
- ✓ SMARTFRAME technology
- ✓ Standard interfaces: electrical and mechanical
- ✓ Standard data bases
- ✓ Predefined parameter set-up
- ✓ Classification right from the start: Instant Classifier™
- ✓ Semi-automatic defect tuning
- ✓ Certified start up-approach

■ Additional functionalities

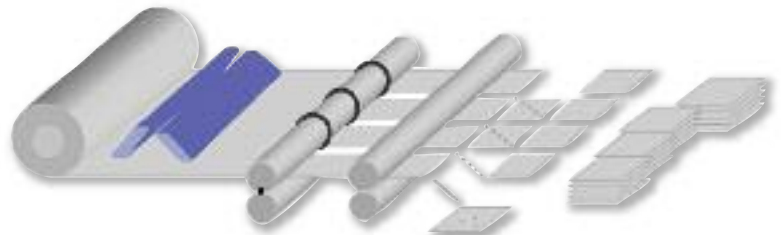
- ✓ Width measurement
- ✓ Quality data archive
- ✓ Texture and process analysis

■ Quality and yield management system QMS

- ✓ REAL TIME production assistance and intelligent decision support
- ✓ Automatic alarming
- ✓ Quality bench marking



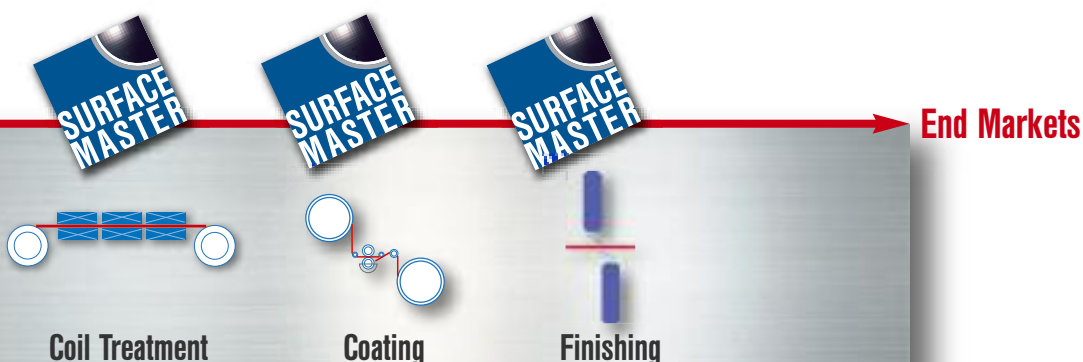
For highest yield: optimization of the slitting plan with the use of surface quality data and flexible quality rules



Surface Inspection Cutter Sorting
Automatic sheet sorting for cut-to-length and slitting lines



Quality Management System QMS enables highest productivity for aluminium mills



SURFACE MASTER

Next generation aluminium surface inspection

Discover the details of the new generation aluminium surface inspection
– Unrivalled in scope

- for **100% correct quality decisions**, improved inspection performance by **data quality** enhancement
- for **reliable and fast defect classification**, advanced, high-end **multi-stage classifier**
- for **reliable production**, highest system availability ... **24/7** ... **up to 99.8%**
- for **complete quality information at one view**, new online reports and visualization
- for **highest user acceptance**, trusted and reliable quality audit capabilities and features
- for **best efficiency: down to ONE month pay back period**, simpler lower cost integration and faster implementation

NEW

Select to **YOUR** needs:

The new generation is available in three different product classes: inspection systems creating value that pays back on your investment – even at the standard level!

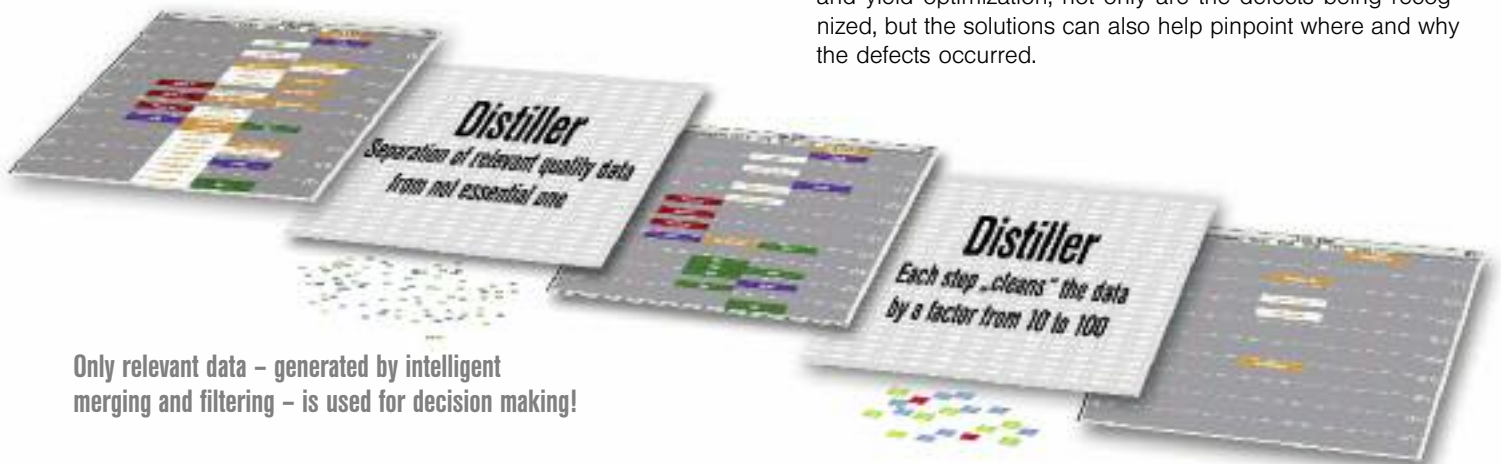
- **SURFACE MASTER Standard**
High-performance entry level inspection system class, including all typically usual benefits.
- **SURFACE MASTER Advanced**
Upper inspection system class with advanced performance and ready for inspection networks.
- **SURFACE MASTER Premium**
Cutting edge ultimate high end inspection system class, with incredible performance – no wish remains open.

Get the key to the future.

Improve process reliability and productivity

One of the key objectives of our solutions, and especially **SURFACE MASTER** is to help make manufacturing both more productive and more cost effective. By employing leading edge surface inspection and the tools for both process monitoring and yield optimization, not only are the defects being recognized, but the solutions can also help pinpoint where and why the defects occurred.

The base for **100% correct quality decisions**:



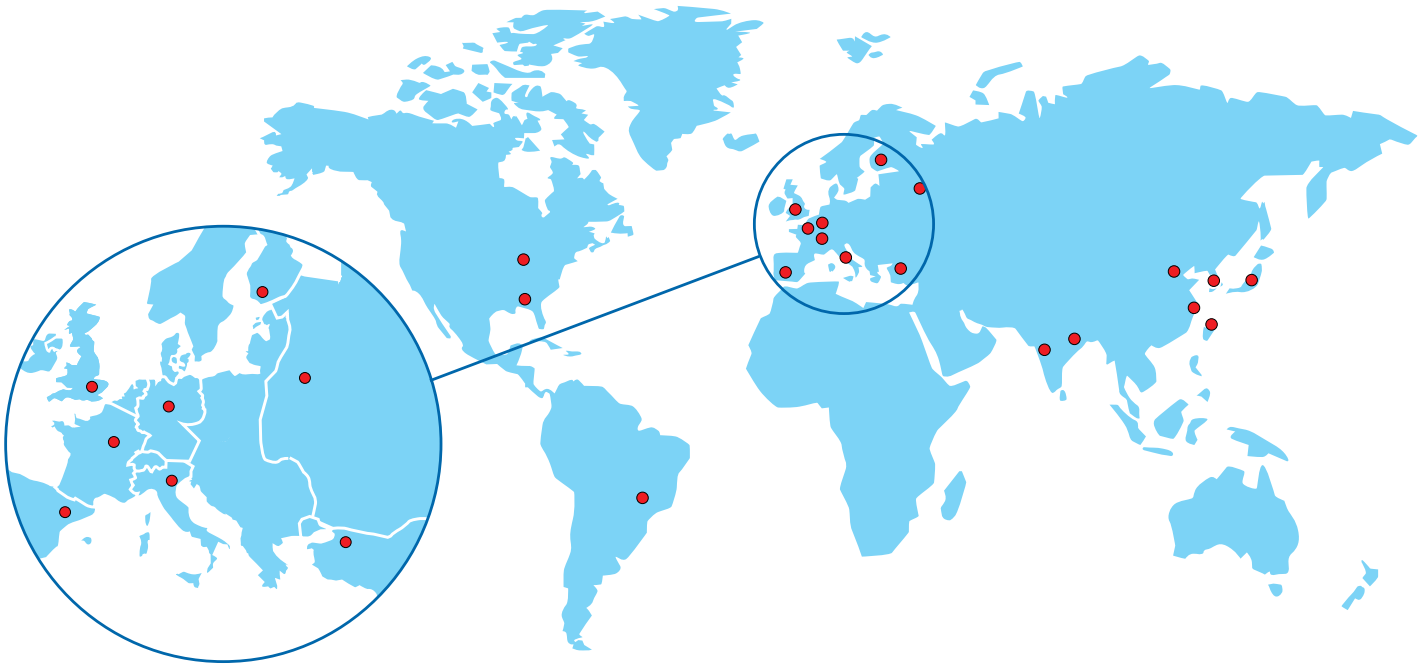
Only relevant data – generated by intelligent merging and filtering – is used for decision making!



SURFACE MASTER



Innovations for Automatic Surface Inspection



Your competent partner

A business relationship with the ISRA VISION group is the beginning of a long term partnership.

Our clients benefit from the experience of our highly qualified team of experts, who work with them to design and implement solutions for the quality inspection applications of the future.

The ISRA VISION group is a global enterprise that guarantees its customers excellence in every aspect: from consulting, service, and confidentiality, to complete solutions and worldwide support.

- We can make your business more competitive and productive
- We view ourselves as a partner and supplier of application oriented standard systems for selected industrial sectors

Challenge us.

**24/7
Support & Service**

On the safe side ... with ISRA **VISION** PARSYTEC

ISRA **VISION** PARSYTEC HELPDESK: **+49 (0)700 ISRA VISION (477 284 7466)**

ISRA **VISION** PARSYTEC

Germany
Tel.: +49 (2408) 92 700-0
Fax: +49 (2408) 92 700-500

UK
Tel.: +44 (1322) 520410
Fax: +44 (1322) 559419

Turkey
Tel.: +90 (212) 285 97 45
Fax: +90 (212) 285 97 43

Spain
Tel.: +34 (93) 589 71 79
Fax: +34 (93) 589 71 79

Italy
Tel.: +39 (0464) 490 603
Fax: +39 (0464) 498 875

France
Tel.: +33 (0)1 55 68 12 50
Fax: +33 (0)1 55 68 10 00

Belgium
Tel.: +32 (2) 6523-866
Fax: +32 (2) 6523-728

Russia
Tel.: +7 (499) 418-0032
Fax: +7 (499) 418-0136

USA
Tel.: +1 (770) 449-7776
Fax: +1 (770) 449-0399

Brazil
Tel.: +55 (11) 3476-1132
Fax: +55 (11) 3476-1132

P.R. China
Tel.: +86 (21) 6891 6286-0
Fax: +86 (21) 6891 6286-888

Korea
Tel.: +82 (2) 790-1326
Fax: +82 (2) 790-1329

India
Tel.: +91 (99) 33 399 642
Fax: +49 (2408) 92 700-500

Japan
Tel.: +81 (3) 6712-1440
Fax: +81 (3) 6712-1441

Taiwan (R.O.C.)
Tel.: +886 (3) 2500-148
Fax: +886 (3) 2500-149

Optimize your ROI – with the technology leader **ISRA**

www.isravision.com

www.parsytec.com

The More You See...

